

Last updated July 2011

Advanced CSS Styles in Claro

You can apply advanced CSS styles such as borders, outlines, rounded corners, and drop shadows to media and some other elements in Claro (such as an image, audio clip, video clip, Flash, embedded video, embedded webpage, recorded activity, hotspot).

To apply Advanced CSS Styles:

1. Double-click an element to open **Properties** (or select the element and click the **Edit** button on the Home toolbar).
2. Click the downward arrow beside **Advanced Styles**.
3. Type your code in the Custom CSS box in the correct format.
4. Click the **Update** button.

See the w3schools website for more information on CSS codes:

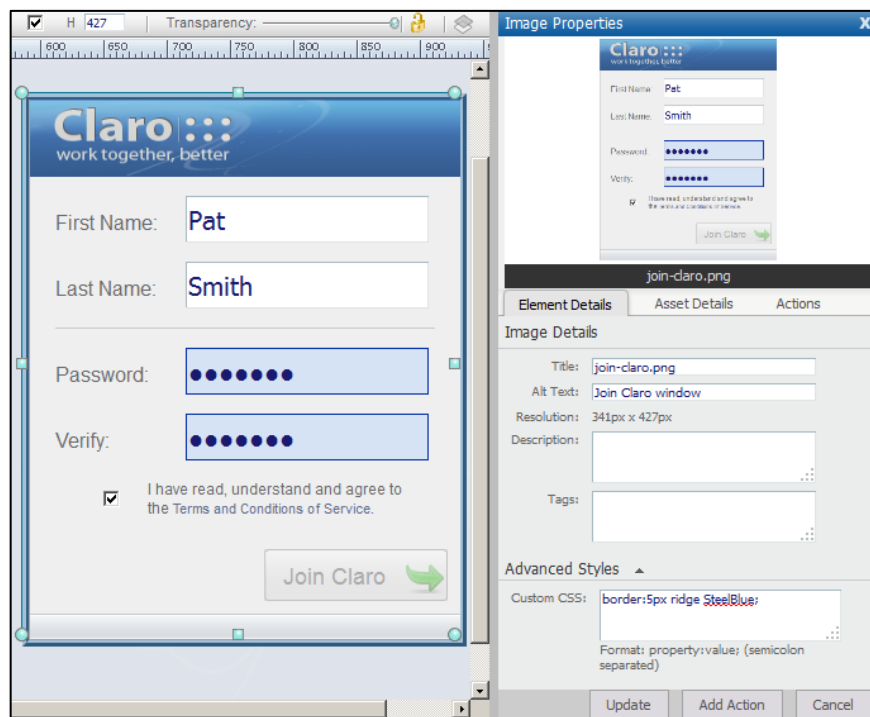
<http://www.w3schools.com/css/default.asp>

Following are screenshots showing simple examples of Advanced CSS Styles applied to pages in Claro.

Border around an image

Border properties allow you to specify the style, color, and width of an element's borders. You can apply the properties consistently around all sides, to only some sides, or differently on different sides.

This code creates a 5 pixel Steel Blue ridged border: `border:5px ridge SteelBlue;`

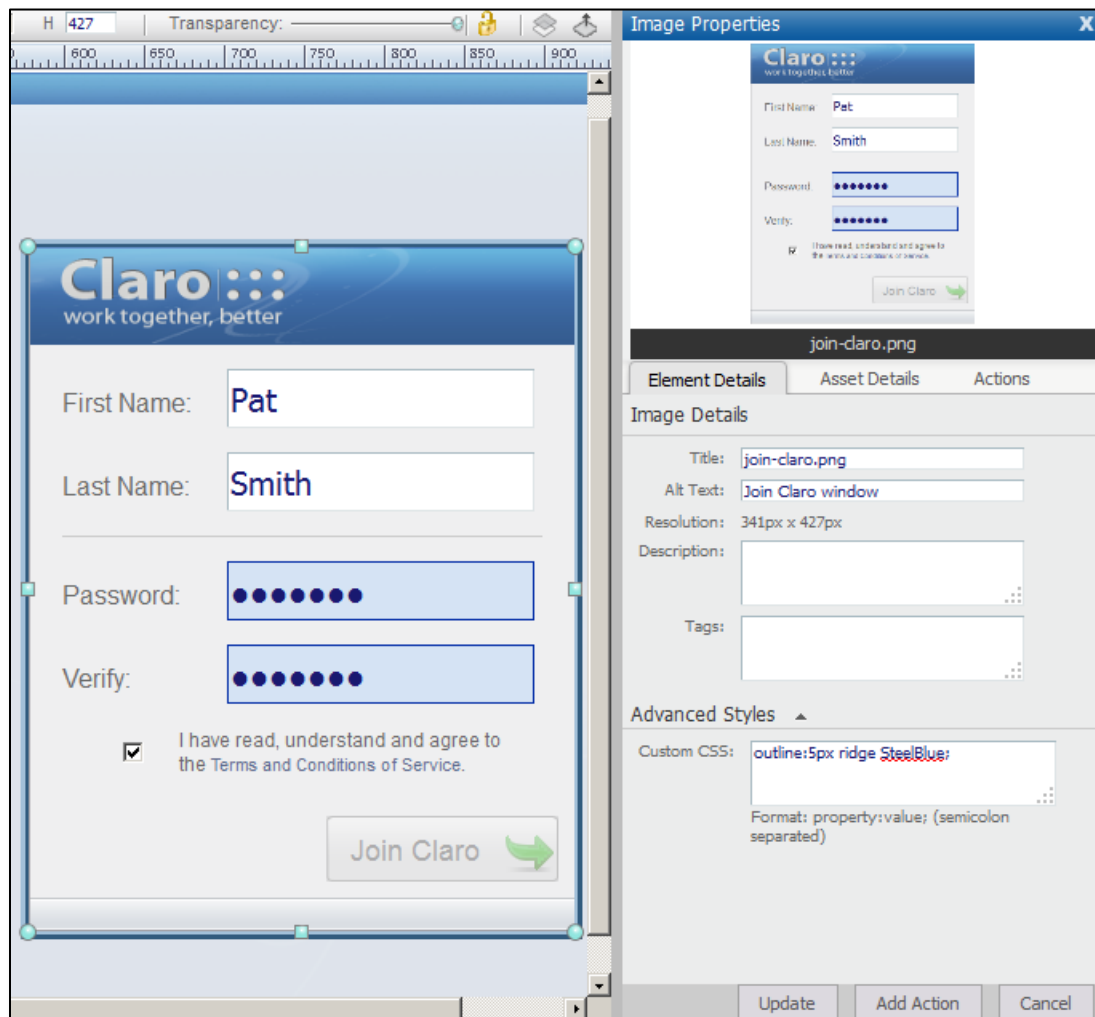


Last updated July 2011

Outline around an image

Outline properties allow you to specify the style, color, and width of an outline drawn around an element's edge (outside the borders). You can apply the properties consistently around all sides, to only some sides, or differently on different sides.

This code creates a 5 pixel Steel Blue ridged outline: `outline:5px ridge SteelBlue;`



Last updated July 2011

Border around part of an audio element

This code creates a 5 pixel solid line border on the bottom and left, with a hexadecimal blue color defined:

```
border-bottom-style:solid;  
border-left-style:solid;  
border-width:5px;  
border-color:#AFE0F6;
```

